

Description

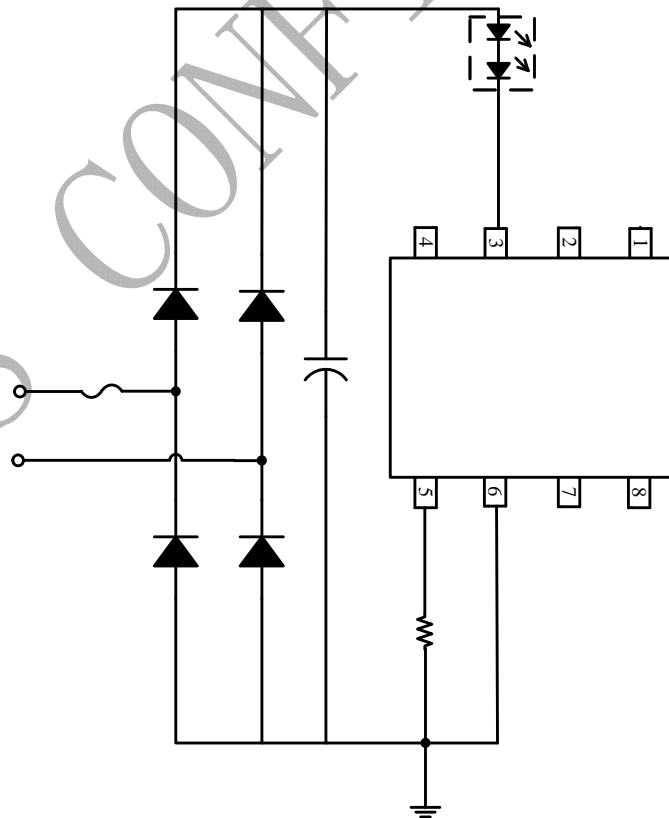
Features

- ◆
- ◆
- ◆
- ◆
- ◆
- ◆
- ◆

Application

- ◆
- ◆
- ◆

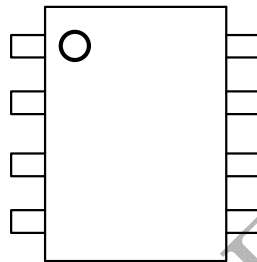
Typical Application



Order Information

Part Number	Package	Temperature	Packing Method	Mark
		°C °C		

Pin mapping



XXXXXY: lot code
WX: sign
YY: week

Pin Descriptions

Pin No.	Pin Name	Descriptions

BPS C